



# REPNAV

**Angola's Only Floating Dock Ship Repair Yard**

**Luanda, Angola | 10,000T Lifting Capacity**

# Contents

- **Why REPNAV**
- **Strategic Location**
- **Floating Dock Capability**
- **Our Service**
- **Repair Execution Process**
- **Floating Dock Operational Process**
- **Certifications and Compliance**

- **Our Clients**
- **Workforce and Technical Capability**
- **Technical School**
- **Sustainability and ESG**
- **HSE**
- **Community Impact**
- **Contact**

# Why REPNAV

The Right Ship Repair Partner in Angola



- **Angola's Only Floating Dock Ship Repair Yard**
- **Strategic Location in Luanda**
- **Full-service Repair Capability**
- **Highly Professional and Experienced Workforce**

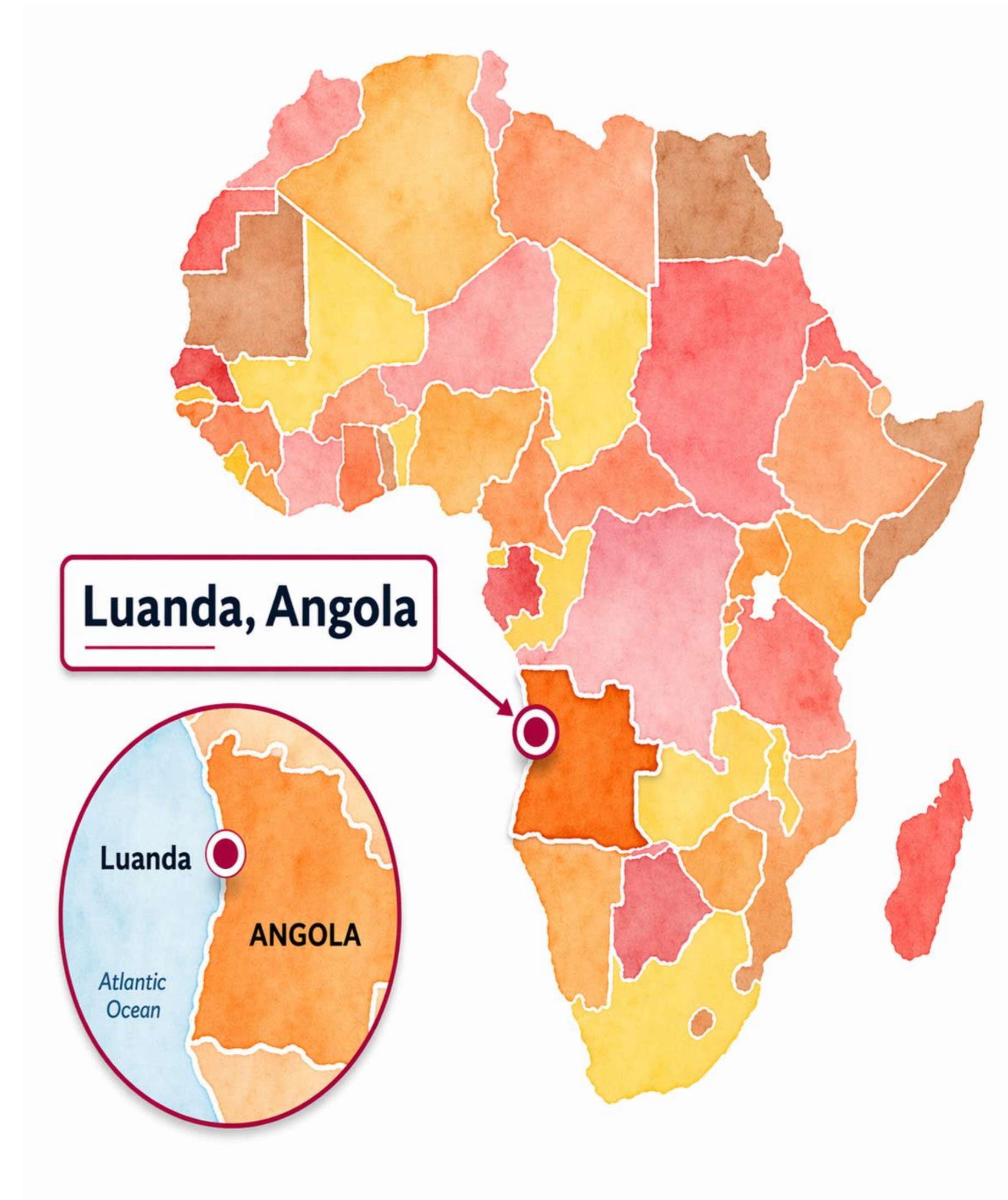
**139.5M Dock | 10,000T Lifting Capacity | 136 Workforce**

# Strategic Location

**Located in Baía de Luanda, Angola's Key Maritime Gateway**

- **Direct Waterfront Access**
- **Proximity to Offshore Oil and Gas Operations**
- **Gateway on South Atlantic Shipping Routes**

**REPNAV's location enables fast vessel access, operational efficiency, and regional maritime connectivity.**



# Floating Dock Capability

**139.5M Dock | 10,000T Lifting Capacity**



## Dock Specifications

- Length: 139.5M
- Width: 32.5M
- Deck Width: 26M
- Lifting Capacity: 10,000T
- Structure: Steel Upper Section  
Concrete Lower Section
- Type: U-shaped Floating Dock

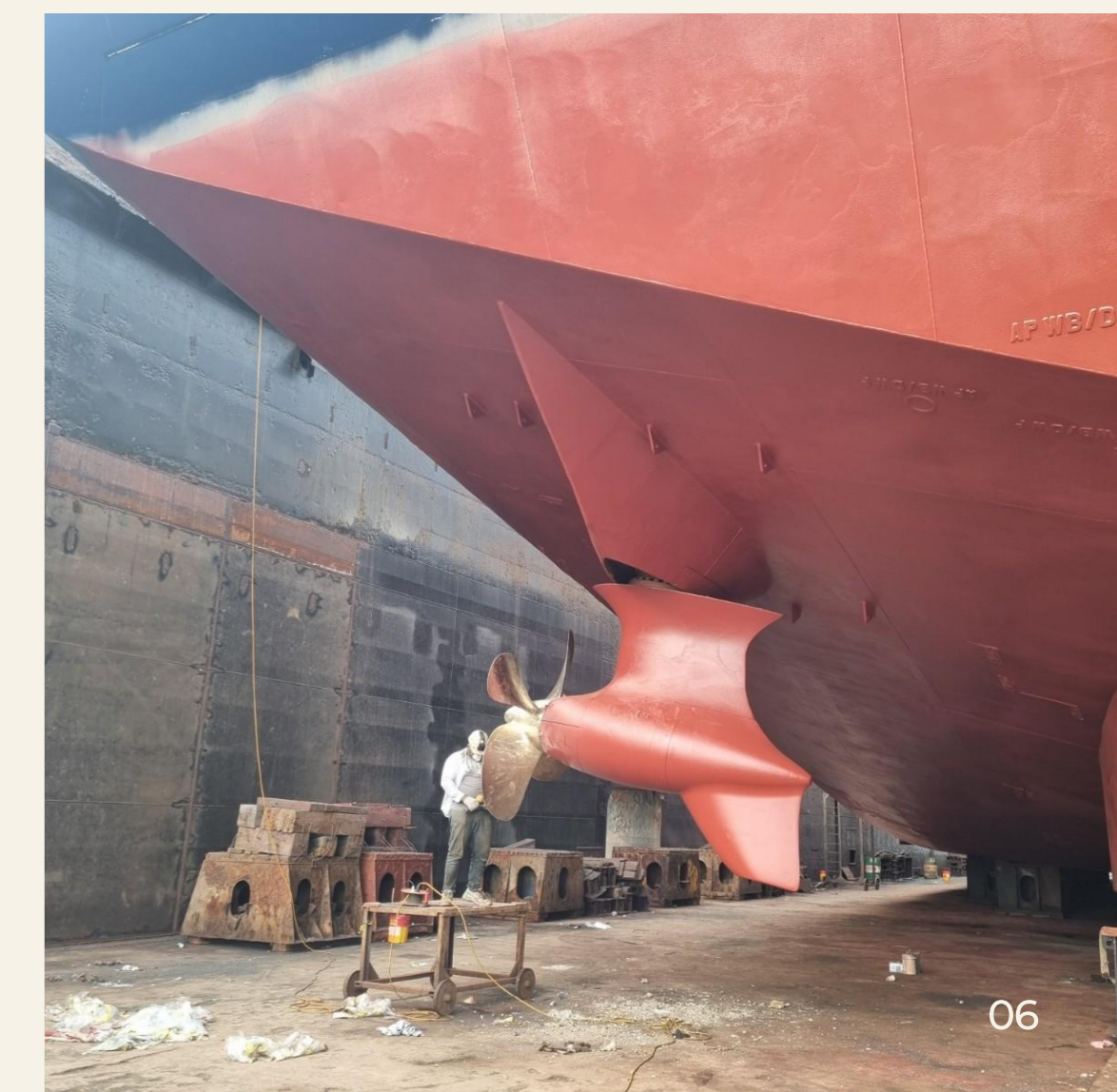
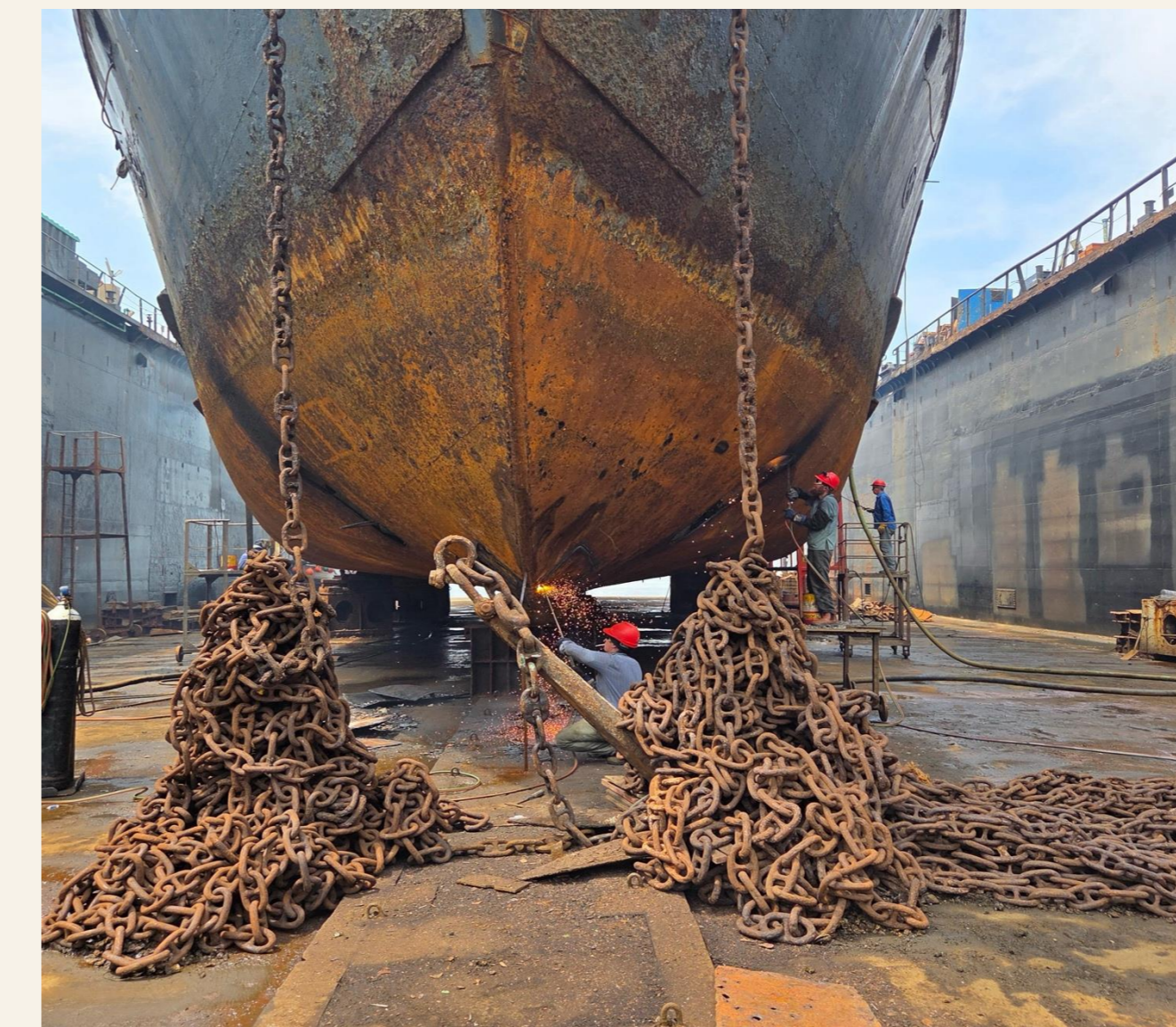
## Operational Capacity

- Maximum Vessel Length: 130–142M
- Maximum Vessel Weight: 10,000T
- Up to 3 Vessels (45M each)
- 1 Large Vessel (130M+)
- Operation: Submersible Ballast Tank System

# Our Service

## Comprehensive Ship Repair Solutions

- Docking and Hull Repair
- Hull Cleaning and Painting
- Propulsion, Rudder and Shaft Line Repair
- Electrical, Piping and Ship Systems Repair
- Diving Works, Tug Support and Fresh Water Supply
- HVAC Service  
Maintenance and Repair of Heating, Ventilation, Air-conditioning Systems and Cooling



# Repair Execution Process



From inquiry to delivery, REPNAV manages the full repair cycle with safety, schedule control, and operational coordination.

# Floating Dock Operational Process



# Certifications and Compliance

Recognized Quality Systems, Technical Approvals, and Regulatory Compliance



Quality Management System



Welding



Technical and Industry-related Approval for Ship Repair and Service Capability



Tax Advisory Supported by EY



Regulatory and Business Compliance in Angola

# Our Clients

Trusted by Offshore and Marine Clients

Selected Clients across  
Offshore Support, Energy,  
Port and Marine Operations



- **Offshore Support**
- **Energy, Oil and Gas**
- **Port and Government**
- **Commercial Marine**

# Workforce and Technical Capability

**160 Total Workforce: 100 Local Professionals, 60 Foreign Professionals**

<b>Part</b>	<b>Responsibilities</b>	<b>Local</b>	<b>Foreign</b>	<b>Total</b>
<b>Office</b>	<b>Planning, Account, Administration</b>	<b>14</b>	<b>6</b>	<b>20</b>
<b>Welding</b>	<b>Hull Welding Repair</b>	<b>15</b>	<b>25</b>	<b>40</b>
<b>Carpenter and Painter</b>	<b>Carpenter Repair</b>	<b>4</b>	<b>3</b>	<b>5</b>
<b>Turner</b>	<b>Processing and Repair</b>	<b>9</b>	<b>6</b>	<b>11</b>
<b>Electricity</b>	<b>Electric Repair and Power Supply</b>	<b>6</b>	<b>6</b>	<b>7</b>
<b>Tug</b>	<b>Tug and Water Supply</b>	<b>7</b>	<b>1</b>	<b>6</b>
<b>Restaurant</b>	<b>Meals Provide</b>	<b>6</b>	<b>1</b>	<b>6</b>
<b>Workshop</b>	<b>Repair and Process</b>	<b>30</b>	<b>10</b>	<b>40</b>
<b>Transfer ship</b>	<b>Transfer for Luggage or Staff</b>	<b>6</b>	<b>1</b>	<b>3</b>
<b>Diving</b>	<b>Diving Work</b>	<b>3</b>	<b>1</b>	<b>3</b>
<b>Total</b>		<b>100</b>	<b>60</b>	<b>160</b>

# Technical School

Progress Starts with People.

- **Level 1–6 Certification Program**  
Structured Technical Development for Workforce Capability
- **Saturday Technical School**  
Hands-on Training Focused on Skills, Safety, and Career Growth
- **Local Talent Development**  
Supporting Long-term Productivity and Professional Growth in Angola



The portrait used is a sample image

# Sustainability and ESG



## Environment

- **Eco-friendly Coatings**
- **Energy-efficient Equipment**
- **Water Recycling**



## Social

- **Training**
- **Safe Workplaces**
- **Local Employment Development**



## Governance

- **Transparent Reporting**
- **Ethics Compliance**
- **Class-approved Procedures**

# HSE

Every Successful Operation Starts with Safety.

- Protecting People, Preventing Incidents
- Continuous Safety Training and Certified Protective Equipment
- Safe Operations Aligned with International Standards



Medical Support



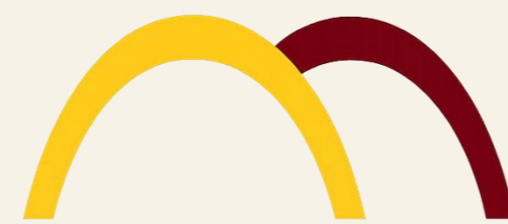
Environmental Protection

# Community Impact

Dream Together  
Growing with Our Community

- Education Support
- Youth and Skill Development
- Local Community Engagement in Angola

DREAM TOGETHER



REALIZAR JUNTOS

Community Impact



# Contact

**For Docking Inquiries, Repair Consultations,  
and Operational Support**

## Phone

**+244 950 288 648  
(WhatsApp)**

## Website

**[www.repnav.com](http://www.repnav.com)**

## Email

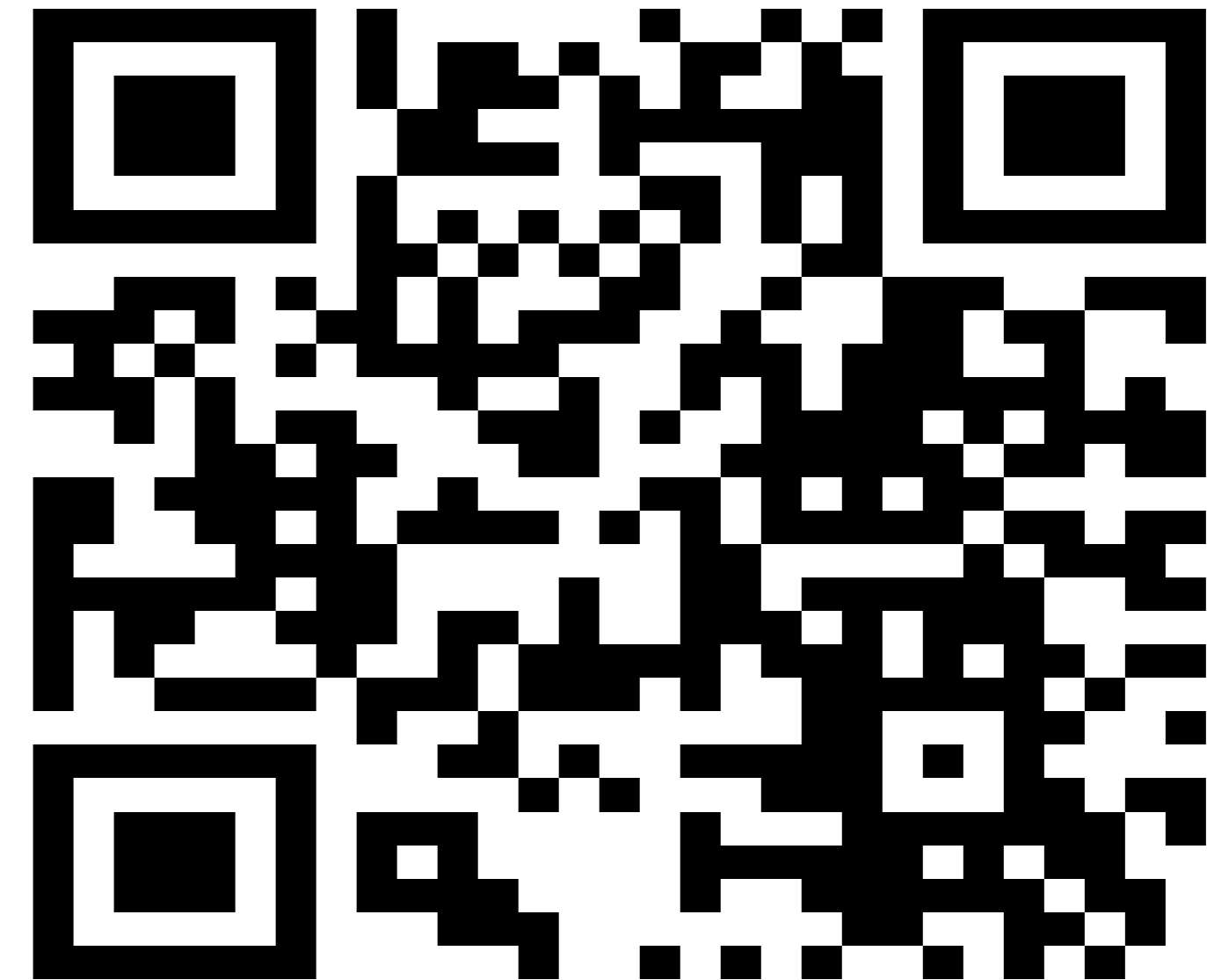
**[repnav.lda@gmail.com](mailto:repnav.lda@gmail.com)**

## CEO Email

**[dongchangjeong1@gmail.com](mailto:dongchangjeong1@gmail.com)**

## Address

**Baia de Luanda,  
Porto Pesqueiro Da Boavista,  
Luanda, Angola**



**Let's Get Your Vessel Back to Sea!**